



# Turfstone™

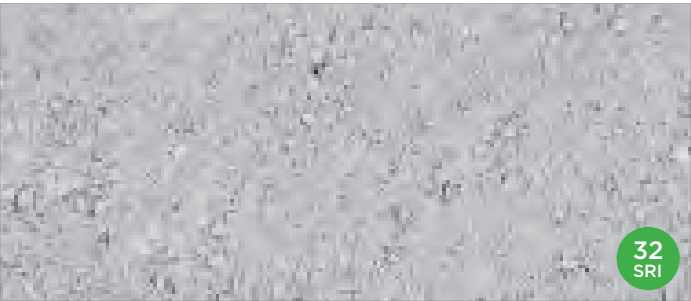


1-800-UNILOCK | [UNILOCK.COM](http://UNILOCK.COM)

**UNILOCK**  
PAVERS & WALLS

# TURFSTONE™

 PERMEABLE



NATURAL



## PRODUCT ATTRIBUTES

Visual Appearance	Its filigree design makes it an attractive and permanent solution for emergency access areas, embankments, spillways, and environmentally sensitive parking areas.
Finish	Classic Finish. Turfstone has the option of being filled with grass or aggregates depending on the project's drainage requirements.

## PRODUCT SPECIFICATIONS



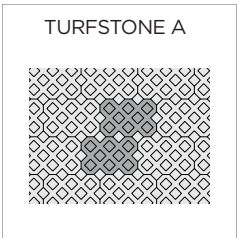
**STANDARD**  
16 x 24 x 3 1/8"  
400 x 600 x 80mm

### EDGE DETAILS



ZERO-BEVEL EDGE

### LAYING PATTERNS



## RECOMMENDED SAND



### Gator Aqua Rock

- | For Residential & Commercial applications
- | For permeable paver joints
- | Helps prevent erosion due to climatic conditions
- | Use as bedding and jointing material
- | Graded to meet ASTM No. 9 water rate
- | Long term high infiltration performance
- | 2,200 lb Supercack available for large applications

#### Coverage:

Size	Area
50lb. bag	20-25 sqft
2,200 lb. Super Sack	880-1100 sqft

(Based on 60mm paver.)



## TECHNICAL INFORMATION

### ASTM C936 Standard Specifications for Solid Concrete Interlocking Paving Units

Conforms to:

- C140 for Absorption 5% avg - 7% max
- Compressive Strength > 7,200 PSI avg.
- C67 for Freeze-thaw Durability
- C418 for Abrasion Durability
- Dimensional Accuracy **+/- 3 mm**

Test results available upon request

### Meets the U.S. Architectural & Transportation Barrier Compliance Board Slip-Resistance Surfaces Advisory Guidelines

**Void Space:** 40%

**Load Capacity:** Turfstone is capable of supporting H<sub>2</sub>O loading over a properly designed and compacted base.

## TECHNICAL ADVANTAGES



### PERMEABLE

Can be installed to allow water to flow through

## PRODUCT DATA

Stones & Bundling	Unit	SqFt Per				Per Bundle		Soldier LnFt Per			Sailor LnFt per			Units Per			Lbs Per		
	Thickness	Bundle	Layer	Section	Stone	Layers	Sections	Unit	Section	Bundle	Unit	Section	Bundle	SqFt	Section	Bundle	Layer	Section	Bundle
Ayr / Gormley Manufacturing																			
Standard	3 1/4" (80mm)	60.00	7.50		2.500	8	-	-	-	-	-	-	-	0.40	-	24	187	-	1,499

Notes: **Special Order item.** Lead time required. Sold in full bundles only on a refundable skid. All measurements are nominal.

Contact your Unilock Territory Manager or call 1-800-UNILOCK for further information. \*For custom options, please contact your Unilock Territory Manager.

## APPLICATIONS



Permeable

\*Turfstone is typically used in erosion control situations. Also known to be used in areas where emergency access routes are required.

## SOLAR REFLECTIVE INDEX (SRI) TESTING DETAILS

Product	Solar Reflectance	SRI
Natural	0.30	32

## LEED INFORMATION

### Rainwater Management: LEED V4:

- Up to three points can be achieved for retaining rainwater onsite based on the percentile kept
- 85% (zero lot line projects only) - 3 points, 95% - 2 points and 98% - 3 points. (All except Healthcare - subtract one point) See LEED v4 for more specific project/site details.

### Materials and Resources: LEED V4:

Building Product Disclosure and Optimization

Sourcing of Raw Materials - Sourcing of Raw Materials and Extraction • **1 point**

Sourcing of Raw Materials - Leadership Extraction Practices • **1 point**

Material Ingredient Reporting - Material Ingredient Reporting • **1 point**

Material Ingredient Reporting - Material Ingredient Optimization • **1 point**

Environmental Product Declaration • **1 point**

### \*Paver Maintenance Tips:

- Equip plow scrapers and blades with shoes or high-density plastic blades to reduce the risk of damaging paver joints and the surface
- Only apply min. amount of de-icing salts necessary to melt the snow and ice. Remove excess salt after ice melts
- Regular cleaning routine should include sweeping or blowing loose debris from the pavement surface, and less frequently, deep cleaning with cleaning products and/or water
- Unilock pavers do not require sealing, however, some people choose to do so for aesthetic purposes

### \*Things to know:

Efflorescence is a naturally occurring calcium salt that can sometimes appear on the surface of concrete and clay products. Efflorescence does not affect the structural integrity of concrete, it is a purely aesthetic issue that typically disappears with no further intervention after a season of rainfall. If desired, the process can be accelerated by washing the surface with an Efflorescence Remover.

For Permeable applications- it is recommended that the jointing material be regularly maintained, including vacuuming, cleaning and reapplying to keep infiltration at its maximum potential.