



# Metro Slab<sup>TM</sup>

1-800-UNILOCK | [UNILOCK.COM](https://www.uni-lock.com)

**UNILOCK**  
PAVERS & WALLS

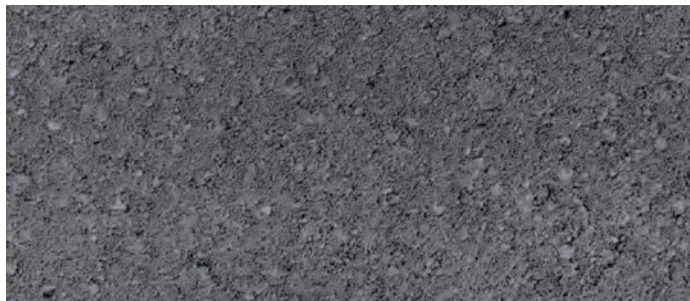


# METRO SLAB™

## CLASSIC



LIMESTONE



MIDNIGHT CHARCOAL



SANDSTONE

### PRODUCT ATTRIBUTES

Visual Appearance	A budget-friendly option for patios, walkways and pool decks where a large size slab is preferred, Available in grey, black and tan tones, this 15" x 30" unit creates a clean, modern look.
Finish	Smooth, classic finish.

### PRODUCT SPECIFICATIONS



15 x 30 x 2 3/4"  
380 x 760 x 60mm

### EDGE DETAILS



ROUNDED EDGE

### RECOMMENDED SAND



#### Gator G2 Super Sand

- | Rain safe after 15 mins
- | Sets above 32° F/ 0° C
- | Can be used for joints up to a max of 2"
- | Dust free and haze free
- | Requires only one watering
- | Two colours: Beige, Slate Grey

#### Coverage:

Colour	Narrow Joints	Wide Joints
Beige, Slate Grey <i>50lb. bag</i>	65-85 sqft	22-42 sqft

### RECOMMENDED SEALER



#### Gator Natural Look Sealer

- | Water-based
- | Zero gloss finish
- | Multi purpose
- | Rain safe after 24 hours

#### Coverage:

Size	Area
3.78 L / 1 U.S. gal.	175 sqft
18.9 L. / 5.28 U.S. gal.	875 sqft

## TECHNICAL INFORMATION

### ASTM C 936 Standard Specifications for Solid Concrete Interlocking Paving Units

Conforms to:

- C140 for Absorption 5% avg - 7% max
- Compressive Strength > 7,200 PSI avg.
- C67 for Freeze-thaw Durability
- C418 for Abrasion Durability
- Dimensional Accuracy **+/- 3mm**

Test results available upon request

**Meets the U.S. Architectural & Transportation Barrier Compliance Board Slip-Resistance Surfaces Advisory Guidelines**

## TECHNICAL ADVANTAGES

### CLASSIC

These products utilize a traditional product mix of large and small aggregates that's consistent from top to bottom with colour mixed throughout

### CLASSIC COAT **NEW**

Factory sealed to protect surface texture and colour

### PEDESTRIAN FRIENDLY

Not recommended for vehicular loads

## PRODUCT DATA

Stones & Bundling	Unit	SqFt Per				Per Bundle		Soldier LnFt Per			Sailor LnFt per			Units Per			Lbs Per		
	Thickness	Bundle	Layer	Section	Stone	Layers	Sections	Unit	Section	Bundle	Unit	Section	Bundle	SqFt	Section	Bundle	Layer	Section	Bundle
<b>Ayr Manufacturing</b>																			
15" x 30"	2 3/4" (60mm)	54.50	9.08		3.03	6	-	-	-	-	-	-	-	0.33	-	18	249	-	1,496

Notes: Sold in full bundles only on a refundable skid. Metro Slab 60mm is not suitable for vehicular applications. All measurements are nominal.

**Important: A urethane rubber paver mat must be used to prevent scuffing.** Contact your Unilock Territory Manager or call 1-800-UNILOCK for further information.

\*For custom options, please contact your Unilock Territory Manager.

## APPLICATIONS



Pedestrian



Borders and Accents



\*Wall pairing suggestion- U-CARA™ Wall or Lineo™ Dimensional Stone

### \*Paver Maintenance Tips:

- Equip plow scrapers and blades with shoes or high-density plastic blades to reduce the risk of damaging paver joints and the surface
- Only apply min. amount of de-icing salts necessary to melt the snow and ice. Remove excess salt after ice melts
- Regular cleaning routine should include sweeping or blowing loose debris from the pavement surface, and less frequently, deep cleaning with cleaning products and/or water
- Unilock pavers do not require sealing, however, some people choose to do so for aesthetic purposes

### \*Things to know:

Efflorescence is a naturally occurring calcium salt that can sometimes appear on the surface of concrete and clay products. Efflorescence does not affect the structural integrity of concrete, it is a purely aesthetic issue that typically disappears with no further intervention after a season of rainfall. If desired, the process can be accelerated by washing the surface with an Efflorescence Remover.

## LEED INFORMATION

### Materials & Resources: LEED V4:

Building Product Disclosure and Optimization

Sourcing of Raw Materials - Sourcing of Raw Materials and Extraction • **1 point**

Sourcing of Raw Materials - Leadership Extraction Practices • **1 point**

Material Ingredient Reporting - Material Ingredient Reporting • **1 point**

Material Ingredient Reporting - Material Ingredient Optimization • **1 point**

Environmental Product Declaration • **1 point**