



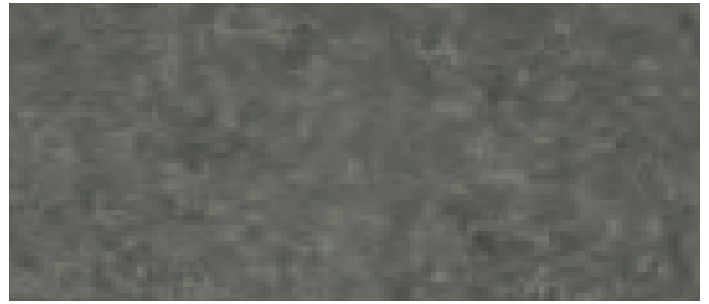
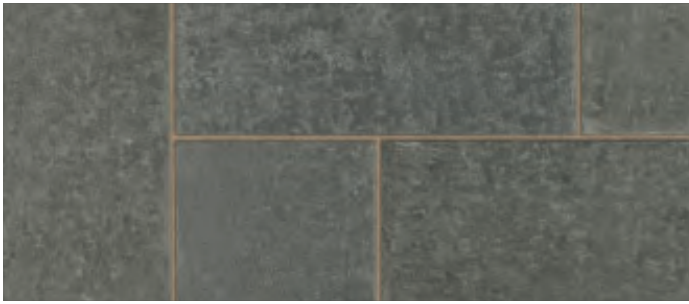
Granite

1-800-UNILOCK | UNILOCK.COM

UNILOCK
PAVERS & WALLS

GRANITE

BLACK OYSTER



PRODUCT ATTRIBUTES

Stone Type	Coarse Grained Granite
Visual Appearance	Charcoal Grey to black with white and black crystals
Origin	Fujian, China
Generic Stone Name	G684 Fuding Black
Age	Jurassic Period (170 million years)
Finish	Sawn 6 sides & Flamed

PRODUCT SPECIFICATIONS



12 x 24 x 1 or 2"
300 x 600 x 25 or 50mm



12 x 36 x 2"
300 x 900 x 50mm



24 x 24 x 1 or 2"
600 x 600 x 25 or 50mm

RECOMMENDED SAND



Gator G2 MAXX Sand

- | Setting time - 15 mins
- | Sets above 32° F/ 0° C
- | Can be applied if rain is expected (min. 1 hr)
- | Dust free and haze free
- | Requires only one watering
- | Four colours: Beige, Grey, Black and Ivory

Coverage:

Colour	Narrow Joints	Wide Joints
Beige, Grey, Ivory 50lb. bag	65-85 sqft	22-42 sqft
Black 50lb. bag	58-76 sqft	20-38 sqft

RECOMMENDED GROUT



Ardex X32 Microtec (Thick bed mortar)

- | Mix with water only- easy to mix & apply
- | Fast setting-grout tiles in 3 hours
- | Ideal for moisture-sensitive stone
- | Excellent sag resistance
- | Coverage 40-80 sq.ft. per bag, depending on size of trowel



Ardex X90 Microtec (Thin bed mortar)

- | Highest levels
- | Fast setting-grout tiles in 3 hours
- | Ideal for moisture-sensitive stone
- | Excellent sag resistance
- | Coverage 40-80 sq.ft. per bag, depending on size of trowel

RECOMMENDED SEALER



Unicare Natural Stone Matte Sealer

- | For porous stones, natural stone only
- | No change of colour
- | No surface coating, sheen or shine at all
- | Riven Sandstone & Smooth Sandstone
- | Coverage 6 m²/L depending on dilution



Unicare Natural Stone Colour Enhancer Sealer

- | Colour enhancement for porous stones, natural stone only
- | Breathable and easy to apply
- | No surface coating, sheen or shine at all
- | Riven Sandstone & Smooth Sandstone
- | Coverage 6 m²/L depending on dilution

LEED Testing Details

Testing Details	Mean
Water Absorbancy	0.07%
Apparent Density	2973 kg/m ³
Flexural Strength	18.8 MPa
Abrasion resistance	14.5 mm
Slip Resistance (When Wet)	66

SOLAR REFLECTIVE INDEX (SRI) TESTING DETAILS

Product	Solar Reflectance	Solar Absorptance	Thermal Emittance
Black Oyster	0.13	0.87	0.89

PRODUCT DATA

Granite Slab- 25mm

Stones & Bundling	Unit Thickness	SqFt/ Crate	SqFt/ Stone	Units/ SqFt	Units/ Crates	Lbs/ Unit	Lbs/ Crate
12" x 24"	1" (25mm)	200	2	0.5	100	13.91	2,700
24" x 24"	1" (25mm)	200	4	0.25	50	14.07	2,730

Granite Slab - 50mm

Stones & Bundling	Unit Thickness	SqFt/ Crate	SqFt/ Stone	Units/ SqFt	Units/ Crates	Lbs/ Unit	Lbs/ Crate
12" x 24"	2" (50mm)	80	2	0.5	40	58	2,336
24" x 24"	2" (50mm)	80	4	0.25	20	110	2,204
12" x 36"	2" (50mm)	78	3	0.33	26	89.87	2,336

APPLICATIONS



Pedestrian



Roof Deck



*Contact your Unilock Territory Manager for installation best practices or visit [unilock.com](https://commercial.unilock.com) and refer to Natural Stone- Installation Guidelines.

commercial.unilock.com/download/documents/technical-guides/

*Granite Maintenance Tips:

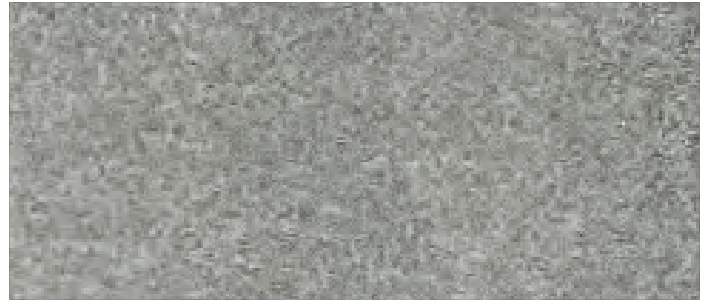
The successful installation of natural stone paving units from Unilock is dependent on the structural integrity of the base below the surface of the slabs. This will include many factors such as wood or concrete decking integrity, site drainage, cutting and quality of concrete mortars and grouts

Natural stone may be susceptible to staining. When stains do occur, it is imperative that they are cleaned properly and safely to ensure that the appearance is restored and that the surface is not altered or damaged. Natural Stone can often be cleaned with just soap and water. Plain water with a stiff brush (DO NOT use a metal wire brush) is the best start; it won't cause damage to stone. NEVER USE PRESSURE WASHERS on fine finished materials; this can leave marks on the stone. Organic stains, such as coffee, wine, food, algae etc., on unsealed surfaces, will usually dissipate naturally over time. Natural stone can be sealed to help prevent the penetration of stains. Always observe sealer manufacturer's directions for usage.

Refer to Unilock's Natural Stone Installation Guide for more details. <https://commercial.unilock.com/download/documents/technical-guides/>

GRANITE

CASTLE GREY



PRODUCT ATTRIBUTES

Stone Type	Coarse Grained Granite
Visual Appearance	Mid Grey with white and black crystals
Origin	Fujian, China
Generic Stone Name	G654
Age	Jurassic Period (170 million years)
Finish	Sawn 6 sides & Flamed

PRODUCT SPECIFICATIONS



12 x 24 x 1 or 2"
300 x 600 x 25 or 50mm



12 x 36 x 2"
300 x 900 x 50mm



24 x 24 x 1 or 2"
600 x 600 x 25 or 50mm

RECOMMENDED SAND



Gator G2 MAXX Sand

- Setting time - 15 mins
- Sets above 32° F/ 0° C
- Can be applied if rain is expected (min. 1 hr)
- Dust free and haze free
- Requires only one watering
- Four colours: Beige, Grey, Black and Ivory

Coverage:

Colour	Narrow Joints	Wide Joints
Beige, Grey, Ivory 50lb. bag	65-85 sqft	22-42 sqft
Black 50lb. bag	58-76 sqft	20-38 sqft

RECOMMENDED GROUT



Ardex X32 Microtec (Thick bed mortar)

- Mix with water only- easy to mix & apply
- Fast setting-grout tiles in 3 hours
- Ideal for moisture-sensitive stone
- Excellent sag resistance
- Coverage 40-80 sq.ft. per bag, depending on size of trowel



Ardex X90 Microtec (Thin bed mortar)

- Highest levels
- Fast setting-grout tiles in 3 hours
- Ideal for moisture-sensitive stone
- Excellent sag resistance
- Coverage 40-80 sq.ft. per bag, depending on size of trowel

RECOMMENDED SEALER



Unicare Natural Stone Matte Sealer

- For porous stones, natural stone only
- No change of colour
- No surface coating, sheen or shine at all
- Riven Sandstone & Smooth Sandstone
- Coverage 6 m²/L depending on dilution



Unicare Natural Stone Colour Enhancer Sealer

- Colour enhancement for porous stones, natural stone only
- Breathable and easy to apply
- No surface coating, sheen or shine at all
- Riven Sandstone & Smooth Sandstone
- Coverage 6 m²/L depending on dilution

LEED Testing Details

Testing Details	Mean
Water Absorbancy	0.30%
Apparent Density	2779 kg/m ³
Flextural Strength	14.4 MPa
Abrasion resistance	13 mm
Slip Resistance (When Wet)	76

Solar and Thermal Optical Properties

Product	Solar Reflectance	Solar Absorptance	Thermal Emittance
Castle Grey	0.25	0.75	0.90

PRODUCT DATA

Granite Slab- 25mm

Stones & Bundling	Unit Thickness	SqFt/ Crate	SqFt/ Stone	Units/ SqFt	Units/ Crates	Lbs/ Unit	Lbs/ Crate
12" x 24"	1" (25mm)	200	2	0.5	100	13.91	2,700
24" x 24"	1" (25mm)	200	4	0.25	50	14.07	2,730

Granite Slab - 50mm

Stones & Bundling	Unit Thickness	SqFt/ Crate	SqFt/ Stone	Units/ SqFt	Units/ Crates	Lbs/ Unit	Lbs/ Crate
12" x 24"	2" (50mm)	80	2	0.5	40	58	2,336
24" x 24"	2" (50mm)	80	4	0.25	20	110	2,204
12" x 36"	2" (50mm)	78	3	0.33	26	89.87	2,336

APPLICATIONS



Pedestrian



Roof Deck



*Contact your Unilock Territory Manager for installation best practices or visit [unilock.com](https://commercial.unilock.com) and refer to Natural Stone- Installation Guidelines.

commercial.unilock.com/download/documents/technical-guides/

*Granite Maintenance Tips:

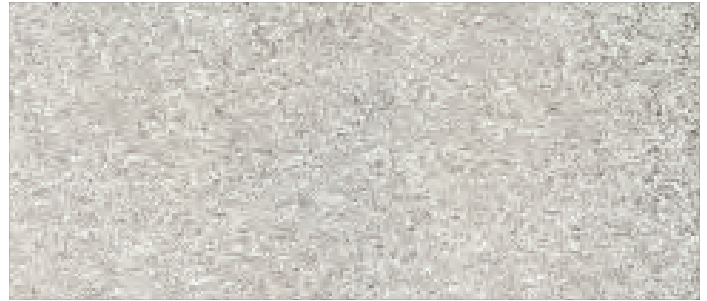
The successful installation of natural stone paving units from Unilock is dependent on the structural integrity of the base below the surface of the slabs. This will include many factors such as wood or concrete decking integrity, site drainage, cutting and quality of concrete mortars and grouts

Natural stone may be susceptible to staining. When stains do occur, it is imperative that they are cleaned properly and safely to ensure that the appearance is restored and that the surface is not altered or damaged. Natural Stone can often be cleaned with just soap and water. Plain water with a stiff brush (DO NOT use a metal wire brush) is the best start; it won't cause damage to stone. NEVER USE PRESSURE WASHERS on fine finished materials; this can leave marks on the stone. Organic stains, such as coffee, wine, food, algae etc., on unsealed surfaces, will usually dissipate naturally over time. Natural stone can be sealed to help prevent the penetration of stains. Always observe sealer manufacturer's directions for usage.

Refer to Unilock's Natural Stone Installation Guide for more details. <https://commercial.unilock.com/download/documents/technical-guides/>

GRANITE

GALAXY FROST



PRODUCT ATTRIBUTES

Stone Type	Coarse Grained Granite
Visual Appearance	Pale grey to off-white with white and black crystals
Origin	Fujian, China
Generic Stone Name	G603-4
Age	Jurassic Period (170 million years)
Finish	Sawn 6 sides & Flamed

PRODUCT SPECIFICATIONS



12 x 24 x 1 or 2"
300 x 600 x 25 or 50mm



12 x 36 x 2"
300 x 900 x 50mm



24 x 24 x 1 or 2"
600 x 600 x 25 or 50mm

RECOMMENDED SAND



Gator G2 MAXX Sand

- | Setting time - 15 mins
- | Sets above 32° F/ 0° C
- | Can be applied if rain is expected (min. 1 hr)
- | Dust free and haze free
- | Requires only one watering
- | Four colours: Beige, Grey, Black and Ivory

Coverage:

Colour	Narrow Joints	Wide Joints
Beige, Grey, Ivory 50lb. bag	65-85 sqft	22-42 sqft
Black 50lb. bag	58-76 sqft	20-38 sqft

RECOMMENDED GROUT



Ardex X32 Microtec (Thick bed mortar)

- | Mix with water only- easy to mix & apply
- | Fast setting-grout tiles in 3 hours
- | Ideal for moisture-sensitive stone
- | Excellent sag resistance
- | Coverage 40-80 sq.ft. per bag, depending on size of trowel



Ardex X90 Microtec (Thin bed mortar)

- | Highest levels
- | Fast setting-grout tiles in 3 hours
- | Ideal for moisture-sensitive stone
- | Excellent sag resistance
- | Coverage 40-80 sq.ft. per bag, depending on size of trowel

RECOMMENDED SEALER



Unicare Natural Stone Matte Sealer

- | For porous stones, natural stone only
- | No change of colour
- | No surface coating, sheen or shine at all
- | Riven Sandstone & Smooth Sandstone
- | Coverage 6 m²/L depending on dilution



Unicare Natural Stone Colour Enhancer Sealer

- | Colour enhancement for porous stones, natural stone only
- | Breathable and easy to apply
- | No surface coating, sheen or shine at all
- | Riven Sandstone & Smooth Sandstone
- | Coverage 6 m²/L depending on dilution

LEED Testing Details

Testing Details	Mean
Water Absorbancy	0.30%
Apparent Density	2634 kg/m ³
Flextural Strength	14.4 MPa
Abrasion resistance	15 mm
Slip Resistance (When Wet)	68

PRODUCT DATA

Granite Slab- 25mm

Stones & Bundling	Unit Thickness	SqFt/ Crate	SqFt/ Stone	Units/ SqFt	Units/ Crates	Lbs/ Unit	Lbs/ Crate
12" x 24"	1" (25mm)	200	2	0.5	100	13.91	2,700
24" x 24"	1" (25mm)	200	4	0.25	50	14.07	2,730

Granite Slab - 50mm

Stones & Bundling	Unit Thickness	SqFt/ Crate	SqFt/ Stone	Units/ SqFt	Units/ Crates	Lbs/ Unit	Lbs/ Crate
12" x 24"	2" (50mm)	80	2	0.5	40	58	2,336
24" x 24"	2" (50mm)	80	4	0.25	20	110	2,204
12" x 36"	2" (50mm)	78	3	0.33	26	89.87	2,336

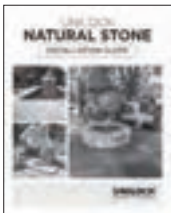
APPLICATIONS



Pedestrian



Roof Deck




*Contact your Unilock Territory Manager for installation best practices or visit [unilock.com](https://commercial.unilock.com/download/documents/technical-guides/) and refer to Natural Stone- Installation Guidelines.

commercial.unilock.com/download/documents/technical-guides/

Solar and Thermal Optical Properties

Product	Solar Reflectance	Solar Absorptance	Thermal Emittance
Galaxy Frost	0.53	0.47	0.90

SOLAR REFLECTIVE INDEX (SRI) TESTING DETAILS

Product	Solar Reflectance	SRI
Galaxy Frost	0.53	62 

*Granite Maintenance Tips:

The successful installation of natural stone paving units from Unilock is dependent on the structural integrity of the base below the surface of the slabs. This will include many factors such as wood or concrete decking integrity, site drainage, cutting and quality of concrete mortars and grouts

Natural stone may be susceptible to staining. When stains do occur, it is imperative that they are cleaned properly and safely to ensure that the appearance is restored and that the surface is not altered or damaged. Natural Stone can often be cleaned with just soap and water. Plain water with a stiff brush (DO NOT use a metal wire brush) is the best start; it won't cause damage to stone. NEVER USE PRESSURE WASHERS on fine finished materials; this can leave marks on the stone. Organic stains, such as coffee, wine, food, algae etc., on unsealed surfaces, will usually dissipate naturally over time. Natural stone can be sealed to help prevent the penetration of stains. Always observe sealer manufacturer's directions for usage.

Refer to Unilock's Natural Stone Installation Guide for more details. <https://commercial.unilock.com/download/documents/technical-guides/>